

Overhead source UV400 High Power



UV400 Superflood with cooling fan :
Single metal halide magnetic lamp with ferromagnetic ballast and ignitor.
UV-A lighting power of 6000µW/cm² to 40cm.
Service life of the lamp: minimum 1000h
Illuminates an area as large as A3 with an irradiance of 2000µW/cm² minimum (when lamp is new).
Parabolic reflector for high reflection in the UV.
Double filter for a complete blockage of UV-B & C.
Thick Wood filter for a good filtering of unwanted visible light. (26*28cm)
Dimensions : 38*30,5*30,5cm ; weight 16,3kg.



Accessories for lamps

Flexible arm :
to be mounted on walls or on benches.



15 rue des Frères Lumière, ZI des Ebissolres, BP136, 78374 PLAISIR Cedex
 courriel: babb-co@orange.fr Web: www.babbco.fr
 Téléphone: 33 (1) 30.80.81.82 Fax/Télécopie: 33 (1) 30.80.81.99



UV-A LEDs Projector

TRITAN™

Features high-flux Three 365 nm Leds UV-A and single-diode 1W delivers a wide beam, to be used in fluorescent NDT :

- Non Destructive Testing
- Fluorescence detection
- Leak detection with tracer

The advantages of LED-UV-A are significant: Low electric consumption, cool running, instant-on operation (lamp reaches full intensity immediately), great autonomy of portable equipment battery, low voltage, mercury free.

Also exists in blue actinic version: TRITAN 450.

Specifications :

Size : Ø 8,5 cm*20,3 cm

Weight : lamp 454g / battery (if delivered too) 700g

Cords :

- Constant AC version (main 230V), 2,4m or 6m cord.
- AC/DC version (sector/battery) secondary, 1,10m, primary 2,40m.

Use : limitless in AC sector, 2h on battery.

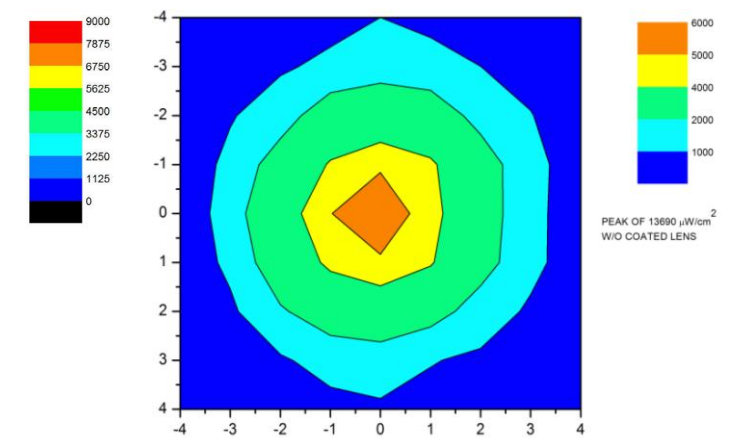
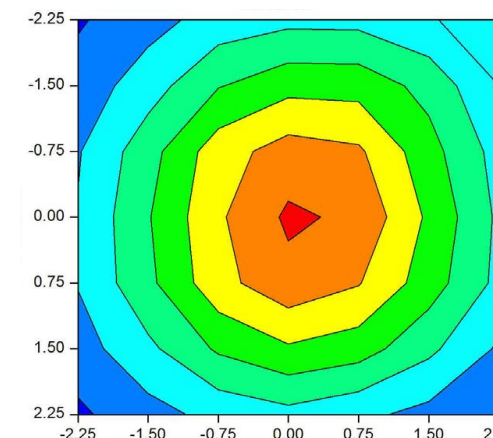
Duration of battery charging: 4h30min

Visible spectrum: average correlated color temperature 5500 ° K

Nominal intensity of 9000 µW/cm² at a distance of approx. 40cm.



Also available : a diffusing filter that allows you to enlarge the beam (40 cm 5500µW/cm² approx.)



Ultraviolet Lights

Classicals with handle : SB100 & FC100

UV-A Light, hand projector. An excellent projector is essential to an inspection under good conditions of comfort and illumination.

What do you expect of such a device ?

- A efficient but safe UV-A irradiance?
- No risk to get burned?
- A prompt bulb replacement without any tools?
- Good impact resistance?

→ Our projectors offers you:

- ✓ A thick and well-designed Wood filter:
Excellent transmission of UV-A
A stray radiation level very low
- ✓ A flexible and impact resistant filter holder which can be unclipped
→ Forget about the screw thread in the sheet, which get damaged
→ Perfect sealing to light.
- ✓ A plastic impact-resistant head that transmits very few the heat of the bulb, bulb "non-deformable, scratchproof".
→ Forget the metal housings too hot and that get damaged!



→ Our projectors offers you moreover :

- ✓ A square holding the bulb "BULB SAVER™" to avoid the early crimping of the base of the bulb
- ✓ Anti-UV goggles & contrast UVS 30 goggles for an easier inspection
- ✓ A vertical support on the ballast for the storage of the head



Characteristic :

Power steady : 100W, stabilization in 5 to 10 min.

7000 $\mu\text{W}/\text{cm}^2$ at aprox. 30 cm

Spare bulb : average pressure mercury vapor lamps, spot beam.

Head weight : (FC 100 cooled) 1,5 kg, (SB100 not cooled) 1,3 kg.

Primary cord : 2,4 m

Secondary cord: 2 m (SB100P/F & FC100F), 5,5 m (FC100XFE) and 6 m (SB100PXF).

NOTA : old mercury-vapor bulbs (of every types) are classified as "hazardous goods".

Compact lamp mercury C100

Ultra-compact lamp with mercury discharge bulb, built-in reflector and separate filter, rubber filter holder: simple manual removal without tools, anti-shock protection & perfect seal to the light;

This projector achieves the feat of being as powerful & more manageable than the standard version with its new high-efficiency bulb & his low weight.

30%-reduction in the weight / size ratio compared to standard projector fitted with bulb PAR 38 100S / M.

Primary cord 2,4m

Secondary cord 2,4m (C100/F)

Secondary cord 6m (C100X/F)

Xenon lamp

Discharge μXenon :

A lot of advantages :

- Instant on/off/restrike.
- Bulb μ discharge 35 W → little calorific generation : the projector is not hot.
- Longer shelf life : 2000 h in average



SPECTROLINE®

Double housing $\frac{1}{4}$ turn-bulb and fixed reflector for a simultaneous change with the reflector: it guarantees an optimal performance in UV-A and the total filtration of UV-B. Flood reflector: faceted for a NDT use.

Spot reflector: parabolic smooth, for other applications (wear of protection goggles UVS 30 mandatory).

Supply : constant AC 230 V

Optional : on 12 V battery (for use in humid conditions and / or "portable".)

- Black resin carter tinted in the mass, unbreakable, scratchproof.
- Rubber filter holder, anti-shock, removable without any tools, perfect seal.
- Quality Wood Filter, a maximum of UV-A, a minimum of unwanted radiation, spherical unbreakable form.



MAXIMA™ 3500



Characteristics :

9000 $\mu\text{W}/\text{cm}^2$ at approx. 30 cm Flood beam.

Head weight : 1 kg.

The only μXe projector with bulb double housing & double filter !